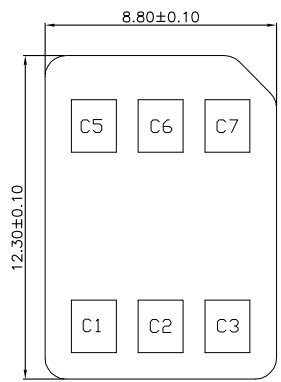
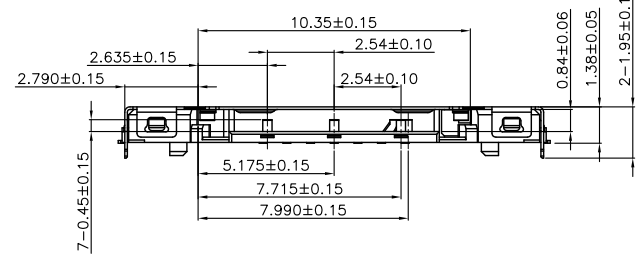


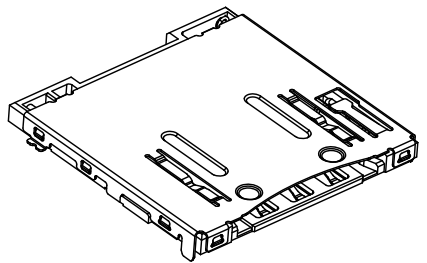
RECOMMENDED PCB LAYOUT(TOP VIEW)
(TOLERANCE:±0.05)

- NOTES:
- 1-1. CONTACT: PHOSPHOR BRONZE. GOLD PLATING ON CONTACT AREA, MATTE TIN 100u"MIN ON SOLDER TAIL AREA. 50u" MIN NICKEL PLATING OVERALL.
 - 1-2. SHELL: STAINLESS STEEL SUS304. 30u" MIN NICKEL PLATING OVERALL. Au 1u" MIN ON SOLDER TAIL AREA.
 - 1-3. HOUSING: LCP BLACK COLOR.
 2. ELECTRICAL REQUIREMENTS:
 - 2-1. CURRENT RATING: 0.5A PER PIN.
 - 2-2. CONTACT RESISTANCE: 50mOhm MAX.
 - 2-3. INSULATION RESISTANCE: 100MOhm MIN. 200VDC FOR 1 MINUTE.
 - 2-4. WITHSTANDING STRENGTH: 500V AC FOR 1 MINUTE.
 3. MECHANICAL REQUIREMENTS: DURABILITY: 3,000 CYCLES MIN.
 4. ENVIRONMENT REQUIREMENTS:
 - 4-1. OPERATING TEMP: -30°C TO +85°C
 - 4-2. STORAGE TEMPERATURE: -40°C TO +85°C
 5. RECOMMENDED PROCESS CONDITION: IR-REFLOW, PEAK TEMPERATURE AND TIME: 250°C, 5~10S.
 6. RoHS and halogen free compliant.

- PAD AREA
- NO TRACE, NO TEST POINT, NO VIA HOLE, NO GROUND AREA
- PATTERNS ONLY FOR GND



SIM CARD LAYOUT



PART.NO.:
SP164-AP401-**

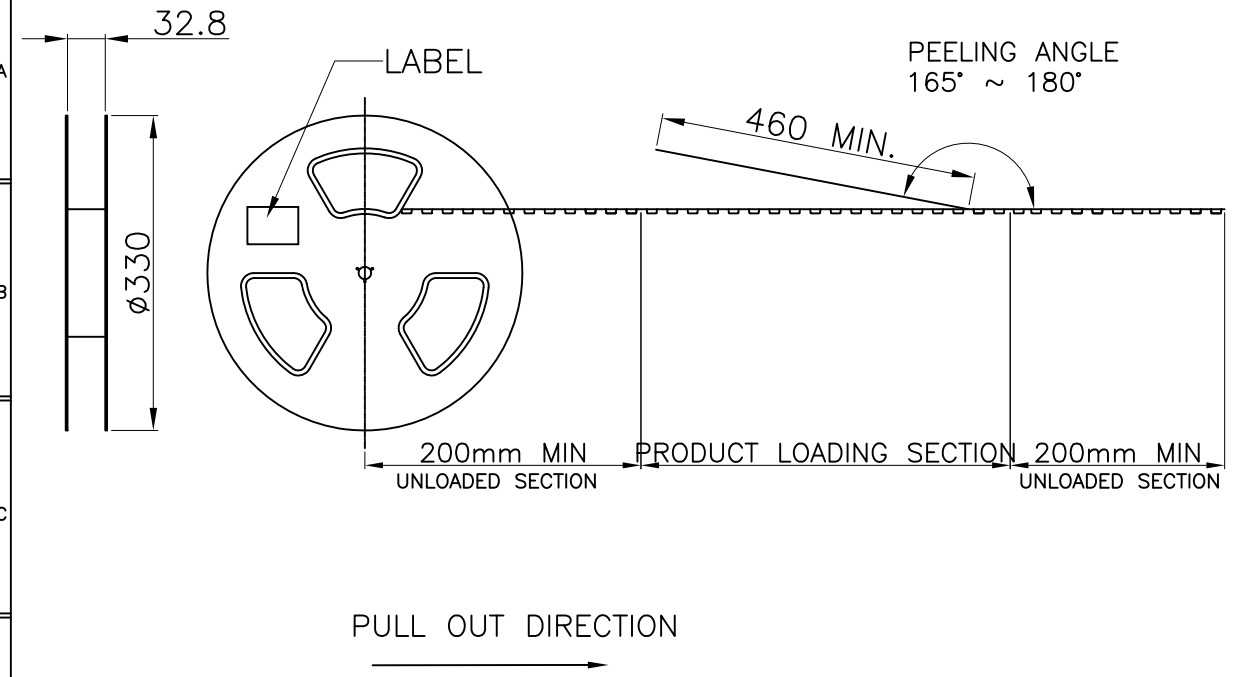
- 42: 功能区镀金1u", 锡脚镀纯锡至少100u"
- 43: 功能区镀金3u", 锡脚镀纯锡至少100u"
- 44: 功能区镀金5u", 锡脚镀纯锡至少100u"
- 45: 功能区镀金10u", 锡脚镀纯锡至少100u"
- 46: 功能区镀金15u", 锡脚镀纯锡至少100u"
- 47: 功能区镀金30u", 锡脚镀纯锡至少100u"

Connector Pin Assignment

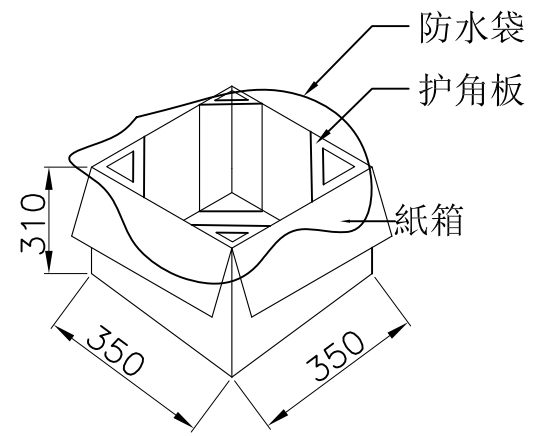
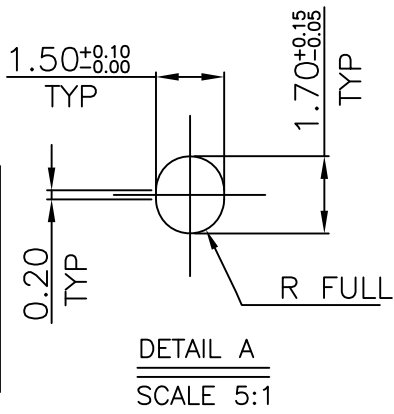
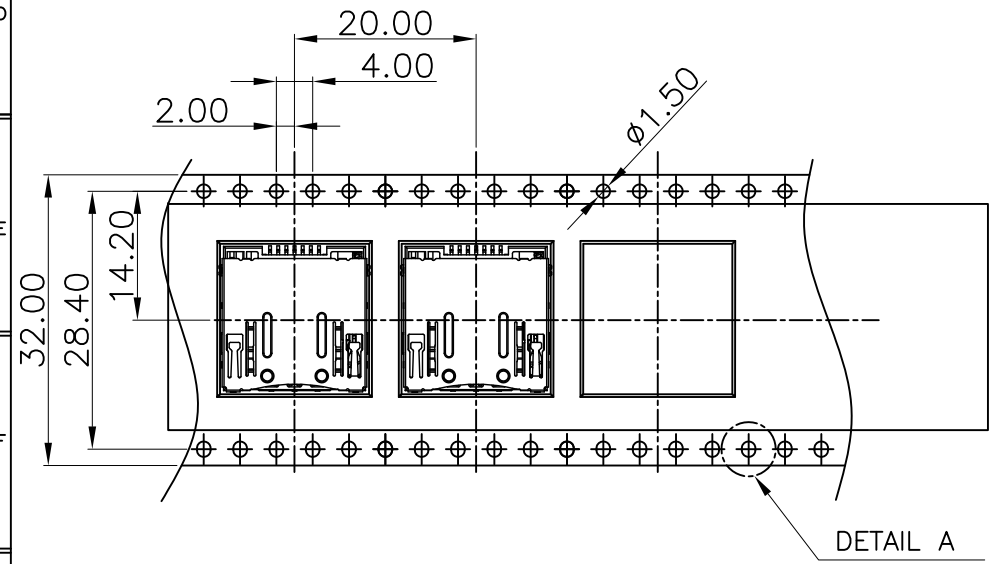
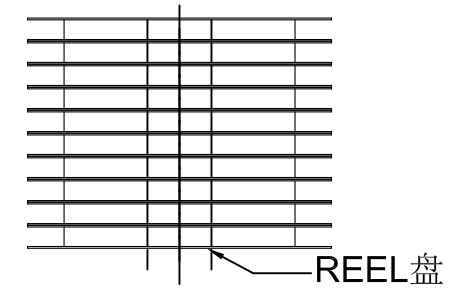
No.	Pin Name	Description
①	C1	Vcc of SIM
②	C2	RST of SIM
③	C3	CLK of SIM
④	C5	GND of SIM
⑤	C6	Vpp of SIM
⑥	C7	I/O of SIM
⑦	SW	Detection Switch (Normal Open)

GENERAL TOLERANCE	DWG.NO.	SP164-AP401-00	PART.NO.	SP164-AP401-**	DRAWN	L. M. J 2018. 11. 30	UNIT	mm	SCALE	NO SCALE
x. ±0.15	REV.	A	TITLE	Nano SIM Push H1.38 with tray	CHECKED		东莞市欧联电子科技有限公司 DONGGUAN OLN ELECTRONICS TECHNOLOGY CO., LTD.			
.x ±0.10	SIZE	A4	SHEET	1 OF 2	APPROVED					
.xx ±0.05										

REV.	ECN.NO.	MODIFY.CONTENT
------	---------	----------------



- NOTES :
- MATERIAL :
COVER TAPE : P.S T=0.05
CARRIER TAPE : P.S T=0.40
REEL : PET/PS UL94V-0
CARTON: CORRUGATED FIBER
 - DIMENSION :
REEL : SEE DRAWING
SHIPPING BOX: 350X350X310mm
 - QUANTITY : SEE TABLE
 - PEELING RESISTANCE : 10gf~130gf (for 12~56mm)
 - PEELING SPEED : 300mm/MINUTES



1000	8	8000
PCS/REEL	REEL/BOX	TOTAL Q'TY

GENERAL TOLERANCE	DWG.NO.	SP99-AP401-00	PART.NO.	SP99-AP401-**	DRAWN	L. M. J 2016. 06. 07
x. ±0.50	REV.	A	TITLE	Nano SIM Push H1.38 with tray	CHECKED	
.x ±0.25	SIZE		SHEET	2 OF 2	APPROVED	
.xx ±0.15	A4					

UNIT mm SCALE NO SCALE

OLN 东莞市欧联电子科技有限公司
DONGGUAN OLN ELECTRONICS TECHNOLOGY CO., LTD.